



Video Telematics: Starter Guide

Installation of Easitrack Dual-Facing Dash Cam

This installation instruction guide is intended for the account fleet manager and serves as a walkthrough of the video feature, the precautions and steps to successfully install and maintain optimal functionality of your new Dash Cam.



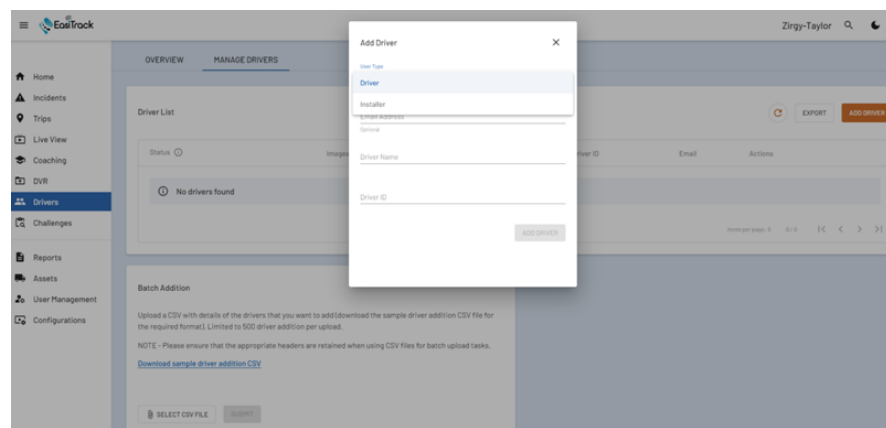
1. Getting Started

After you purchase a device, an email will be sent to the fleet manager with a link to login to the EasiTrack Fleet Portal using your email address and temporary password. From there, you will be required to reset the password after a login with the temporary password.

If you have not received an email please contact Easitrack Technical Support via email: support@easiTrack.com or Call: (888) 744-6449.

2. Set up List of Users/Drivers

- ☑ Fleet Manager must set up the list of users as either “Installer” or ”Driver” under the ‘MANAGE DRIVERS’ section of the ‘Drivers’ tab of the fleet portal in order to allow others access to the “RideView Companion” App.
- ☑ Fleet Manager must first set up the person performing the installation of the camera(s) as the Installer; this will allow the installer to access the “RideView Companion” App to complete the installation process by using the credentials sent to the Installer’s email.
- ☑ When setting up Drivers, it is strongly recommended NOT entering the Driver’s email (Optional Field) so the Drivers will not have access to the RideView Companion App which could be a potential hazard distraction while driving.
- ☑ To use the Face ID feature that uses face recognition technology, you can optionally also add driver face images at the time of driver enrollment (or later) by uploading 5 images (as per instructions in the image upload FAQ):
- ☑ In the trips page on the portal, a thumbnail corresponding to the recognized driver is displayed – this is the detected Face ID:



12/13/2021 11:54:24



Bengaluru

Bengaluru

Laxman

5

2.86

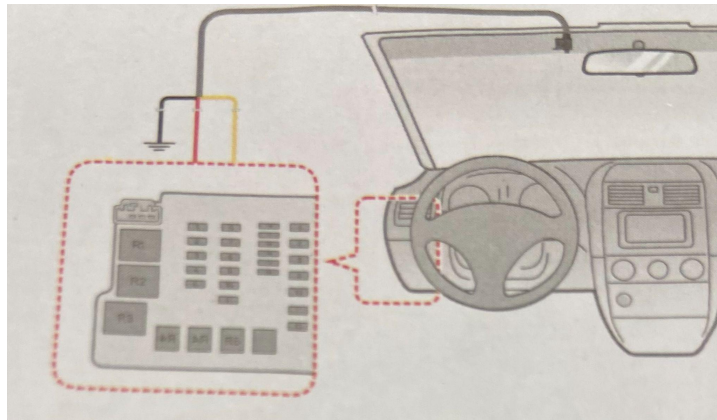
Note: The RideView App only works within a very close range distance from the camera.

3A. Installation: Precaution and Notices

- ☑ This device has been tested and certified to meet the applicable limits for Radio Frequency (RF) exposure. This equipment should be installed and operated with a minimum distance of 20 cm between the device & your body.
- ☑ For your own safety, do not operate the product's controls while driving. Using this product does not exempt the driver from taking full responsibility for his/her driving behavior, which includes observing all traffic rules and safety regulations.
- ☑ Make sure the dash cam is positioned in a way that does not obstruct the driver's view or airbag deployment.
- ☑ Make sure that no object is blocking the camera lens and no reflective material appears near the lens. Please keep the lens clean.
- ☑ Video quality may be degraded if the vehicle's windshield is tinted.
- ☑ If the car's windshield is tinted with a reflective coating, its surface may be athermic and impact GPS reception. In this instance, please mount the device in a "clear area".
- ☑ The device will automatically calibrate its G-sensor during start-up. Always turn on the device after it is mounted in place to avoid G-sensor malfunction.

3B. Installation: Route the main cable

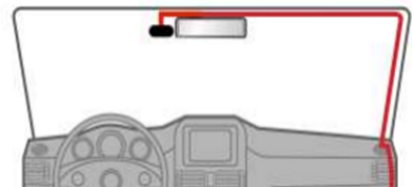
1. Route the main cable inside the vehicle, leaving the main connector exposed at where the dash cam is to be installed on the windshield and the other end going toward the vehicle's power source.
2. Use a multimeter to locate a fuse that supplies power even when the vehicle is turned off (such as the emergency hazard lights and interior/door lights) and connect the yellow wire (B+) to the fuse.
3. Use the multimeter to locate a fuse that does not supply power when the vehicle is turned off (such as the indicator lights) and connect the red wire (ACC) to the fuse.
4. The black wire (GND) must be connected to the vehicle's ground point. This product may not work properly if it is not grounded.



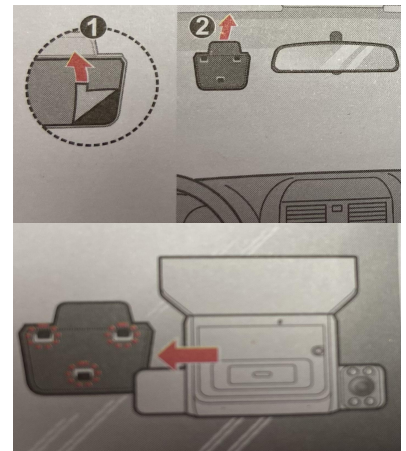
3C. Installation

Cleaning the windshield with rubbing alcohol before mounting the fleet cam is highly recommended.

Install your device in the vehicle as per the images shown. We recommend installing as biased (off-center) towards the driver (for optimal DMS functionality), and as high as possible, in compliance with local regulations and without impeding the driver's view of the road.



5. Peel the film off from the back of the rear plate and affix the rear plate securely onto the windshield. Press on the plate firmly for approximately 30 seconds to ensure it is mounted securely.
6. Wait at least one hour (a wait period of 24 hours is recommended) before attaching the Dash Cam to the mounting plate in order for the adhesive to form a strong bond between surfaces.
7. Attach the dash cam to the mounting plate by matching the positions of the three mounting holes on the back of the camera with the hooks on the rear plate. Slide the dash cam to the left to lock it in place.



3D. Installation: Adjust camera viewing angle

1. Download and Install the RideView Companion App.

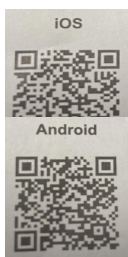
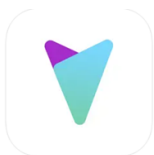
This is an application enables the user interface with the Dash Cam to:

- Live-stream video from both cameras to help in installation
- Configure the camera application:

If you are using an **Android smartphone or tablet, install our companion app from the [Play Store](#)*


If you use an **iPhone, install our iOS companion app from the [App Store](#)*

2. Enable BLUETOOTH & WIFI (If Using **iPhone** Disable "Auto join")



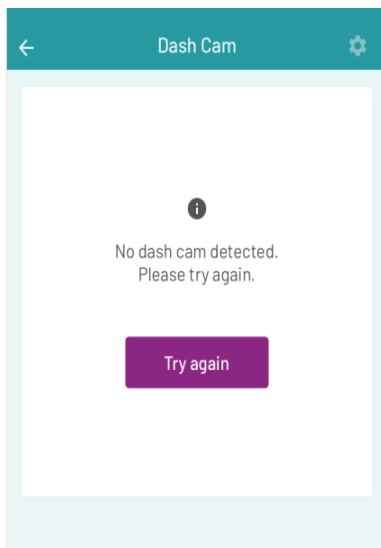
3D. Installation: Adjust camera viewing angle

3. Launch the mobile app and Login with the account credentials provided by the fleet manager

4. Tap  (Dash Cam) icon located on the Homepage of the app and follow the steps shown below to see a live-stream video from the camera. (Use this to adjust each camera's viewing angle using the corresponding live view displayed by the app to ensure proper mounting.)

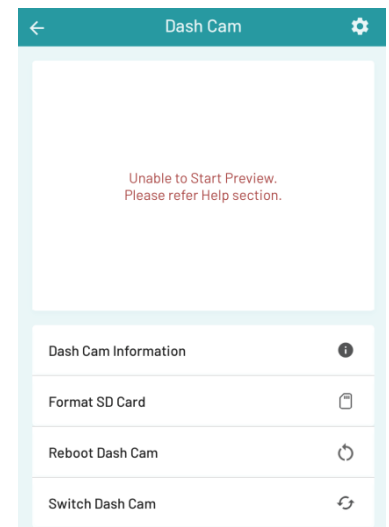
5. Select the Dash Cam's IMEI number in the pop-up message prompted

6. To establish connection and get Live Preview, select "Join" when pop-up prompts; "RideView Companion" Wants to Join Wi-Fi Network..."



***If "No dash cam detected..."
Or
"Unable to Start Preview..."**

**Please skip this section and read the following
3E. Installation: Settings (Steps 10 through 12)
and contact Easitrack Technical Support for
instructions on setting the APN
Call: (888) 744-6449**



7. Follow steps 8 and 9 as shown to see a live-stream video from the camera, **CLICK THE Dash Cam** to switch views, and ensure proper mounting.

3D. Installation: Adjust camera viewing angle

WARNING: DO NOT ADJUST THE CAMERA'S VIEWING ANGLE WITHOUT HAVING LOOSENED THE CORRESPONDING LOCKING SCREWS FIRST.

8. Use the 'Show Guides' option to overlay the recommended mounting for the cameras:

- When adjusting the front-facing camera's viewing angle, make sure the vehicle is parked on level ground and the camera's view is parallel to the ground. The ground to sky ratio should be close to a 50/50 split.
- The area enclosed by the orange rectangle is processed by the ADAS engines.
- Ensure this portion has a clear and unobstructed view of the road as shown, with the horizon line in the SAFE ZONE, by rotating the road facing camera appropriately and locking it in place.

(Road)Front-facing camera:

- In order for the Driver Monitoring System (DMS) to function properly, ensure that the driver camera is placed to provide a clear view of the driver as shown below, by rotating it appropriately and locking it in place.



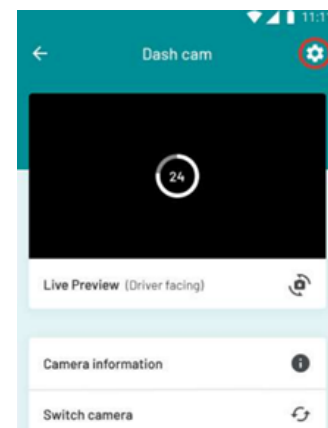
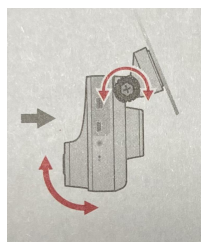
DO NOT INSTALL THE DRIVER-FACING CAMERA ON THE PASSENGER SIDE

- Ensure you do not move the camera once installed, as it will interfere with the existing camera calibration settings and cause inconsistent performance.




(Driver)Interior-facing camera:

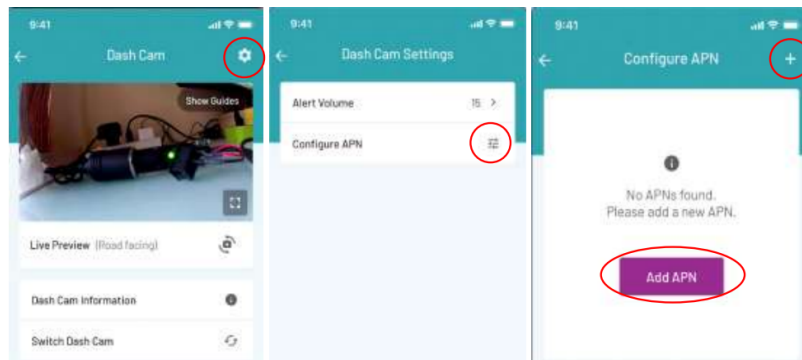
9. Tighten the locking screws with an M2 hex key by turning it in the clockwise direction to lock each camera's position once the angle is set.



3E. Installation: Settings

10. Go to Dash Cam Settings  (Settings icon) on the top right of the screen. Settings: This is the camera configurations screen. Currently you can configure the volume on the camera, and APN settings on the camera if necessary.*

***Note:** This camera has been configured by Easitrack with specific APN settings that will allow the camera to function and connect to the RideView App. Please REFRAIN from re-configuring the APN settings unless otherwise instructed by Easitrack Technical Support.

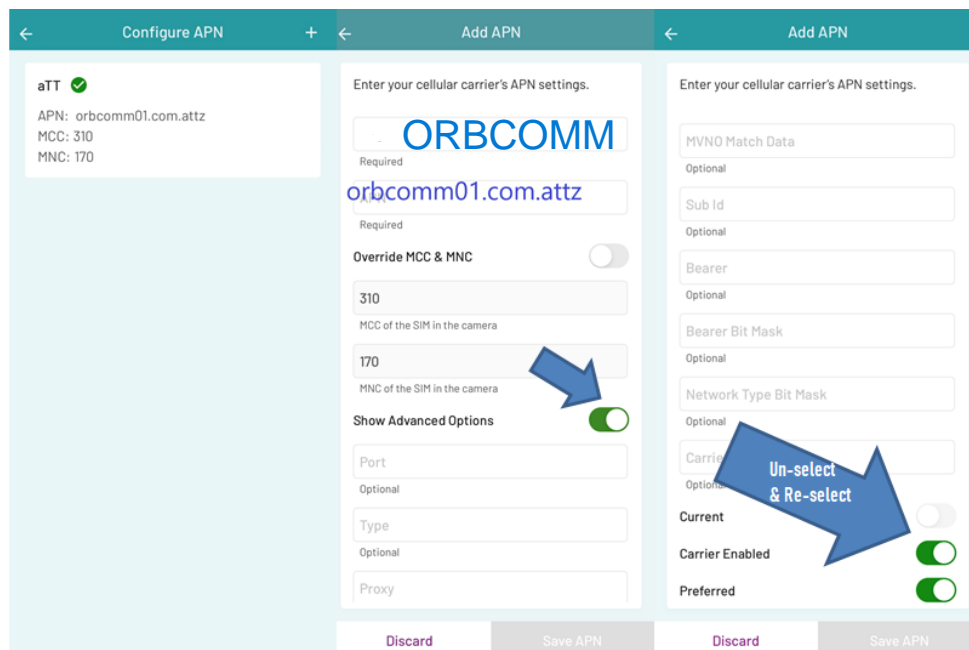


Once you see the camera preview click on the *Setting* on top Right

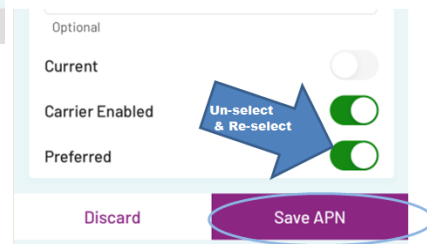
Click on Configure APN

Add APN

11. Select Configure APN and select the +(Add icon) and enter your cellular carrier’s APN settings provided : APN; orbcomm01.com.attz, MCC: 310, and MNC:170 as shown below:



12. Select “Show Advanced Options” then scroll to the end of the page and ensure you have checked “Carrier Enabled” and “Preferred” for the APN configuration before you click Save APN. (Note: If the Save APN Button is not enabled, disable “Preferred” and select again to enable it and “Save APN”).



3F. Installation: Complete the installation using the device/ Taking a trip

- Before using the dash cam to record videos, peel off the protective film covering the camera lens. The dash cam will automatically turn on once the vehicle engine is started and the system will automatically begin continuous recording after a few seconds.
- During continuous recording, if a sudden event (such as running over a road bump, vehicle collision, high-speed driving, or making a sharp turn) has been detected, the G-sensor will prompt the fleet cam to record the event. You can also press the emergency recording button to record a video manually while continuous recording is in progress.

Status LED on the Gemini



3F. Installation: Complete the installation using the device/ Taking a trip

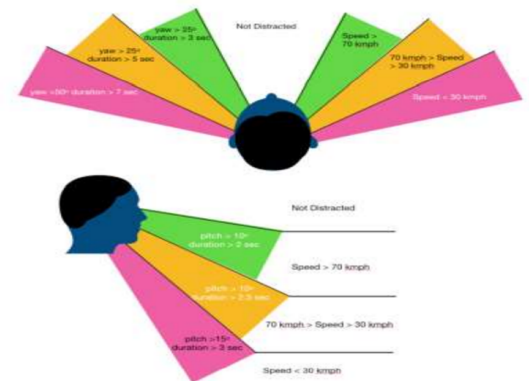
- The camera boots up when it is powered ON.
- When the vehicle's ignition is switched ON, the camera automatically starts a trip:
- If the camera is connected to the internet, the LED will blink green every 15 s.
- If the camera is not connected to the internet, the LED will blink cyan every 15 s.
- When the vehicle's ignition is switched OFF, the camera automatically stops the trip.
- All pending data is uploaded to the cloud, and the camera is shut-down after 1 minute.
- While the camera is shutting down or it receives no power, the LED will blink red every 500 ms.
- If the camera is unconfigured the LED will blink white every 500 ms. In such instances, please reach out to support@easitrack.com with your device model and IMEI number.

4. LED Indicators

Behavior	Indication
Network connectivity LED emitting a steady cyan light	Fleet cam initializing
Network connectivity LED emitting a blue light at 15-second intervals	Wireless connection not established
Network connectivity emitting a green light at 15-second intervals	Wireless connection established
Emergency recording LED emitting a red light at 500 ms intervals	Power supply is interrupted

5. Alerts & Notifications

NOTE: A self-calibration step is necessary before lane and forward collision warnings and violations are enabled. This calibration process takes a few minutes of driving on a road with clearly marked lanes, at a speed greater than 30 mph, to complete (verbal alert - “following distance monitoring starts”). The calibration process happens immediately during the first trip after installation, and is stored and reused for subsequent trips. Pre-calibration, forward collision warning performance could be inconsistent.



5A. Standard notifications

If the RideCam Standard Service plan is enabled for the device, the following audio notifications can be heard when driving. If there is a corresponding violation an event video will be generated for the same and uploaded.

- G-sensor alerts: A “hard acceleration/hard braking/hard cornering”. Audio warning is issued when such events are triggered when detected by the g sensor in the camera.

- Driving over the speed limit: An “over-speeding” audio warning is issued when the vehicle is traveling over the maximum speed limit (default value 70 mph).

5B. ADAS notifications

If the RideCam Pro Service (with ADAS) is enabled for the device, the following additional notifications can be heard when driving. If there is a corresponding violation an event video will be generated for the same and uploaded.

- Speed limit alert: A “speed limit XX/speed limit violation” audio warning is issued when the vehicle is traveling over the speed limit.
- STOP sign alert: A “STOP sign/STOP sign violation detected” audio warning is issued when the driver did not come to a complete stop upon reaching a stop sign.
- Front collision alert: A “distance warning” is issued to warn the driver of an impending collision.
- Tailgating alert: A “following too close” audio warning is issued when driving too closely to the vehicle in front. (Only enabled when driving above 20 mph).
- Lane drift alert: A “lane drifting” audio warning is issued when the vehicle gradually drifts from the center of the lane for a certain period of time (Only active when driving above 30 mph).

5C. DMS notifications

If the RideCam Advance Service is enabled: A “distracted” audio warning is triggered when the driver’s head position has deviated from its normal position for a specific length of time (only active when driving above 3.1 mph).

- Thresholds and other configurations for all of the above events are visible (and can be set) in the ‘Configurations’ tab in the dashboard.

NOTE: Configurations are set by vehicle duty type (Heavy/Medium/Light), and not for an individual camera/asset.

Press the panic button on the camera to manually trigger an event video capture:

6. Fleet Dashboard/Viewing trips and videos

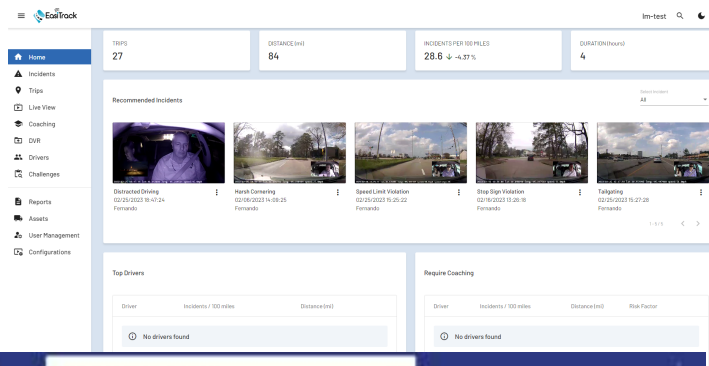
Launch a web browser and go to Easitrack fleet dashboard to log in to the video module, which allows you to access all trip and video data recorded by dash cams assigned under your account.


- Your account credentials will be registered by the fleet manager and provided by Easitrack technical support upon request.
- The emails are sent from the account support@easitrack.com. Please check your spam folder if you do not find them in your inbox, and tag the sender as not[1]spam in your email client.

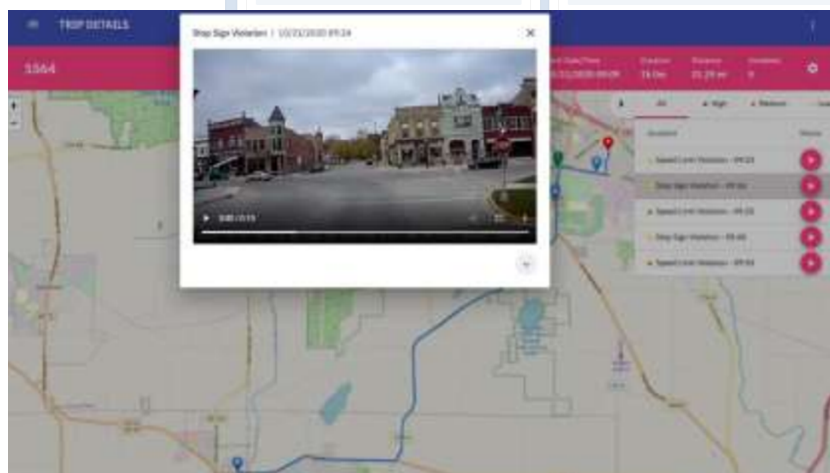
- ☑ Trips and videos from all cameras assigned to your account will be visible here, along with advanced driver and fleet analytics. The fleet dashboard provides comprehensive functionality around advanced video telematics, described here in more detail:

6A. Viewing Trips & Videos

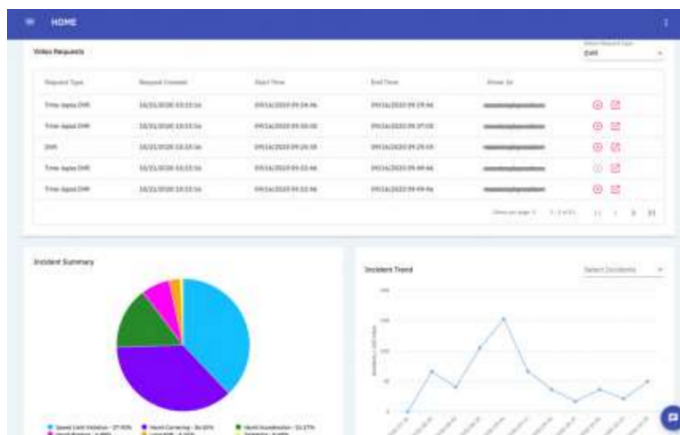
The dashboard's home page is displayed upon login. This page contains a summary of overall statistics, driver scorecards, and a highlight reel of incidents sorted by severity.



Trip details - To view trip information and event videos captured by your vehicles, click on Trips in the main menu bar located on the left-side of the dashboard, select a trip to open the Trip Details page, and click  to view the corresponding event video captured during this trip.



A requests drawer shows video request history, incident summary and incident trends:



changing the configuration is not recommended as it may impact the performance of the camera.

7. Caring for your device

- Taking good care of your device will ensure trouble-free operation and reduce the risk of damage.
- Keep your device away from excessive moisture and extreme temperatures.
- Avoid exposing your device to direct sunlight or strong ultraviolet light for extended periods of time.
- Do not place anything on top of your device or drop objects on your device.
- Do not drop your device or subject it to severe shock.
- Do not subject your device to sudden and severe temperature changes. This causes moisture condensation inside the unit which could damage your device. In the event of moisture condensation, allow the device to dry out completely before use.
- Never attempt to disassemble, repair, or modify your device. Disassembling, modifying or attempting to repair on your own may damage your device, inflict bodily harm or property damage and will void any warranty.
- Do not store or carry flammable liquids, gasses or explosive materials in the same compartment as your device, its parts or accessories.
- Overheating may damage the device.

8. About/ GPS Disclosure

- GPS (Freq=1575.42MHz) is operated by the United States government, who is solely responsible for the system's performance. Any change to the GPS system can affect the accuracy of all GPS equipment.
- GPS satellite signals cannot pass through solid materials (except glass). GPS positioning is unavailable when you are inside a tunnel or building. Signal reception can be affected by conditions such as poor weather or dense overhead obstacles (e.g. trees, tunnels viaducts and tall buildings).
- GPS positioning data is for reference only.

9. Regulatory Information

- K220 is assigned a model number of N703/ Dash Cam

FCC Federal Communication Commission Interference Statement

This device complies with Part 15 of the FCC Rules. Operation is subject to the following two conditions: (1) This device may not cause harmful interference, and (2) this device must accept any interference received, including interference that may cause undesired operation.

This equipment has been tested and found to comply with the limits for a Class B digital device, pursuant to Part 15 of the FCC Rules. These limits are designed to provide reasonable protection against harmful interference in a residential installation. This equipment generates, uses and can radiate radio frequency energy and, if not installed and used in accordance with the instructions, may cause harmful interference to radio communications. However, there is no guarantee that interference will not occur in a particular installation.

If this equipment does cause harmful interference to radio or television reception, which can be determined by turning the equipment off and on, the user is encouraged to try to correct the interference by one of the following measures:

- Reorient or relocate the receiving antenna.
- Increase the separation between the equipment and receiver.
- Connect the equipment into an outlet on a circuit different from that to which the receiver is connected.
- Consult the dealer or a radio/TV technician for help.

FCC Caution: Any changes or modifications not expressly approved by the party responsible for compliance could void the user's authority to operate the equipment. This transmitter must not be co-located or operating in conjunction with any other antenna or transmitter.

This device contains license-exempt transmitter(s)/receiver(s) that comply with Innovation, Science and Economic Development

This device has been tested and meets applicable limits for Radio Frequency (RF) exposure. This equipment should be installed and operated with a minimum distance of 30 cm between the radiator and your body.

CE

Products marked with the CE label comply with the Radio Equipment Directive (Directive 2014/53/EU)-issued by the Commission of the European Community. The manufacturer cannot be held responsible for the modifications made by the User and the consequences thereof, which may alter the conformity of the product with the CE Marking.

Declaration of Conformity



Hereby, Easitrack declares that the K220/N703 Dash Cam is in compliance with the essential requirements and other relevant provisions of Directive 2014/53/EU.